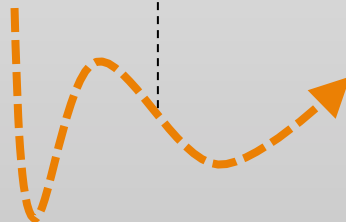


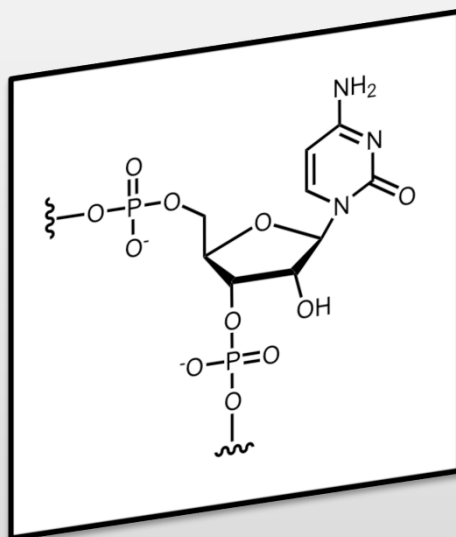
# Talking to the Mirror: *In Vitro* Evolution of a Cross-Chiral Ribozyme

Jonathan T. Szczepanski  
Texas A&M University

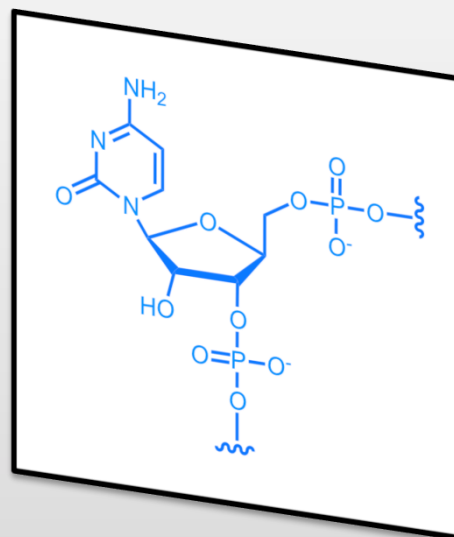


# D-RNA vs. L-RNA

**D-RNA**



**L-RNA**



- Life on Earth uses exclusively D-nucleic acids
- D-RNA is rapidly degraded *in vivo*

- L-nucleic acids are no longer found in nature
- L-RNA is invisible to natural biology

**D-RNA and L-RNA do not form contiguous base pairs!**



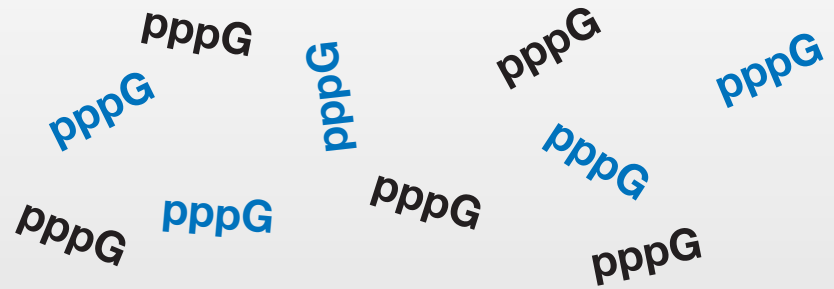
# Cross-Chiral Inhibition

L-RNA

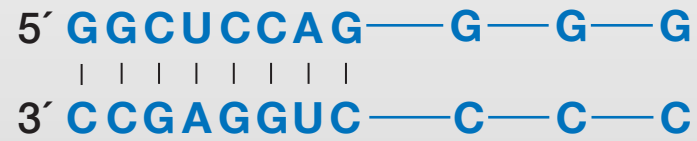




# Cross-Chiral Inhibition



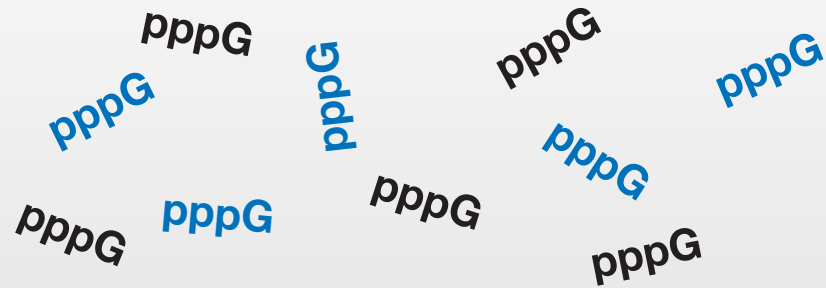
L-RNA



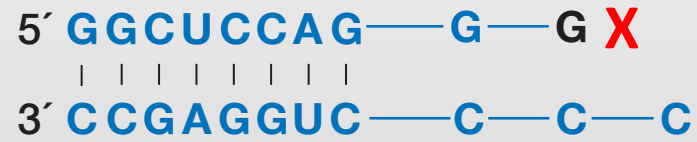




# Cross-Chiral Inhibition

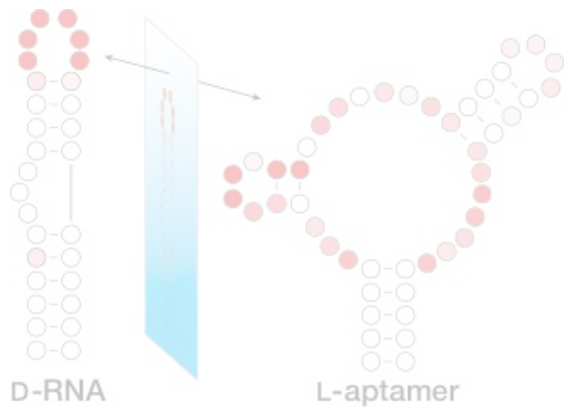


L-RNA

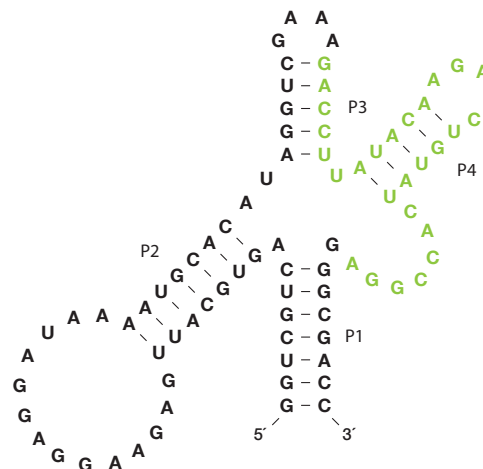


# D-RNA vs. L-RNA

Can we prepare an L-RNA aptamer against a natural D-RNA target?

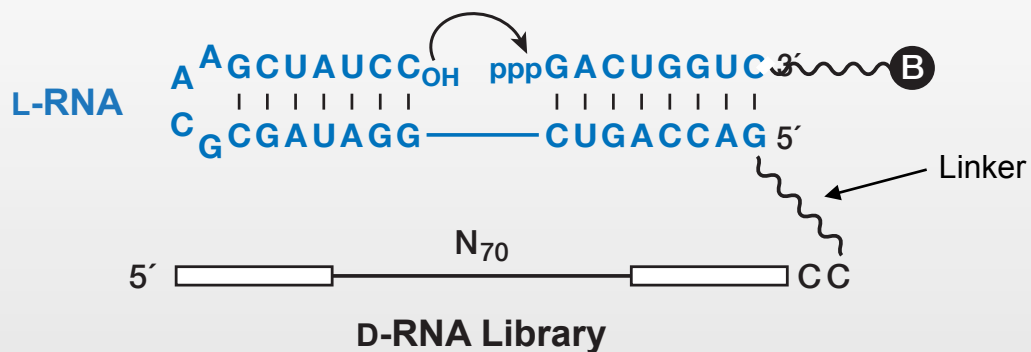


Is cross-chiral catalysis by an RNA enzyme (ribozyme) possible?

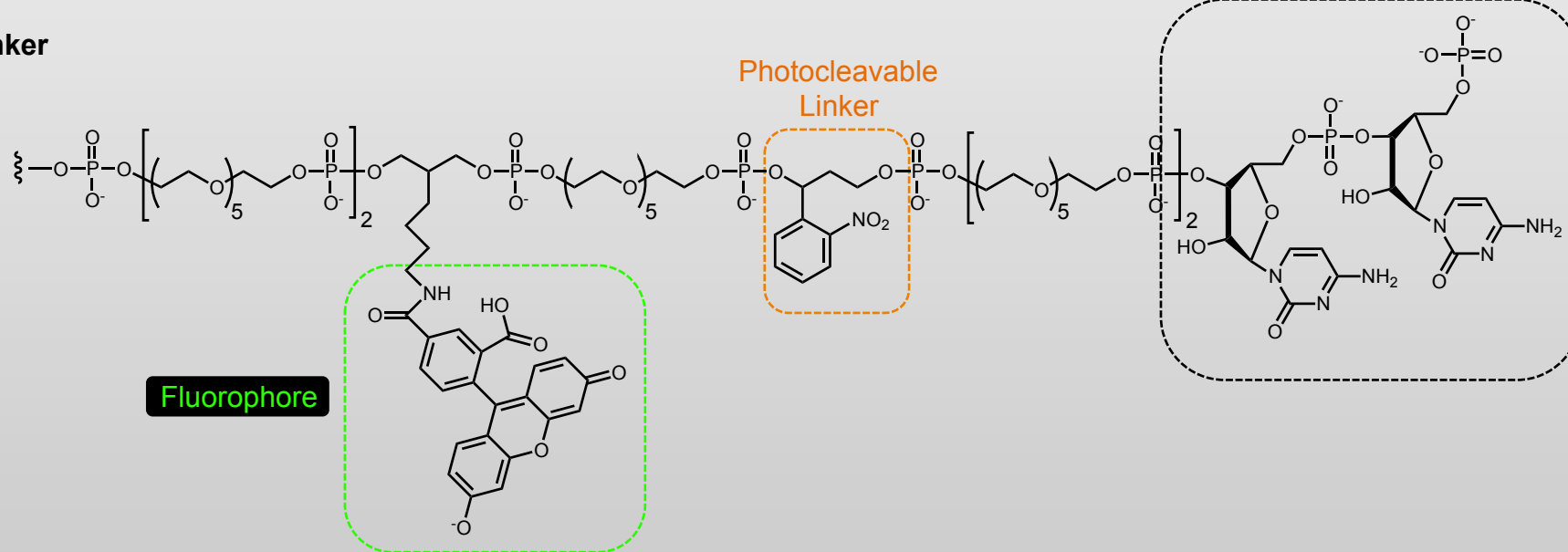




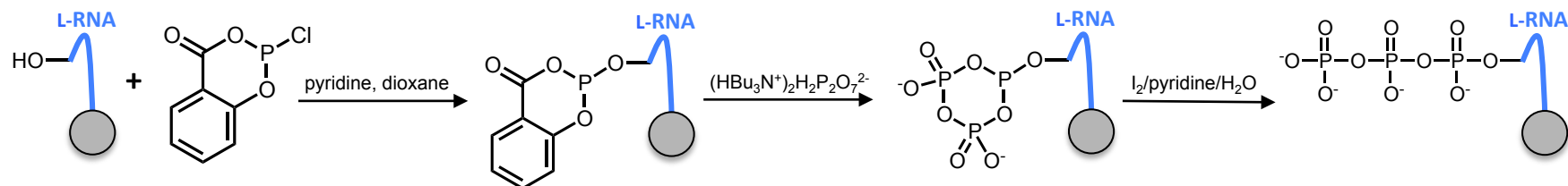
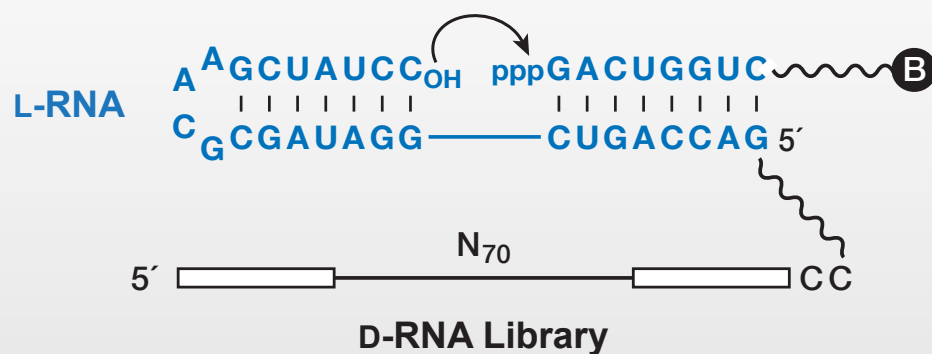
# In Vitro Evolution of a Cross-Chiral Polymerase Ribozyme



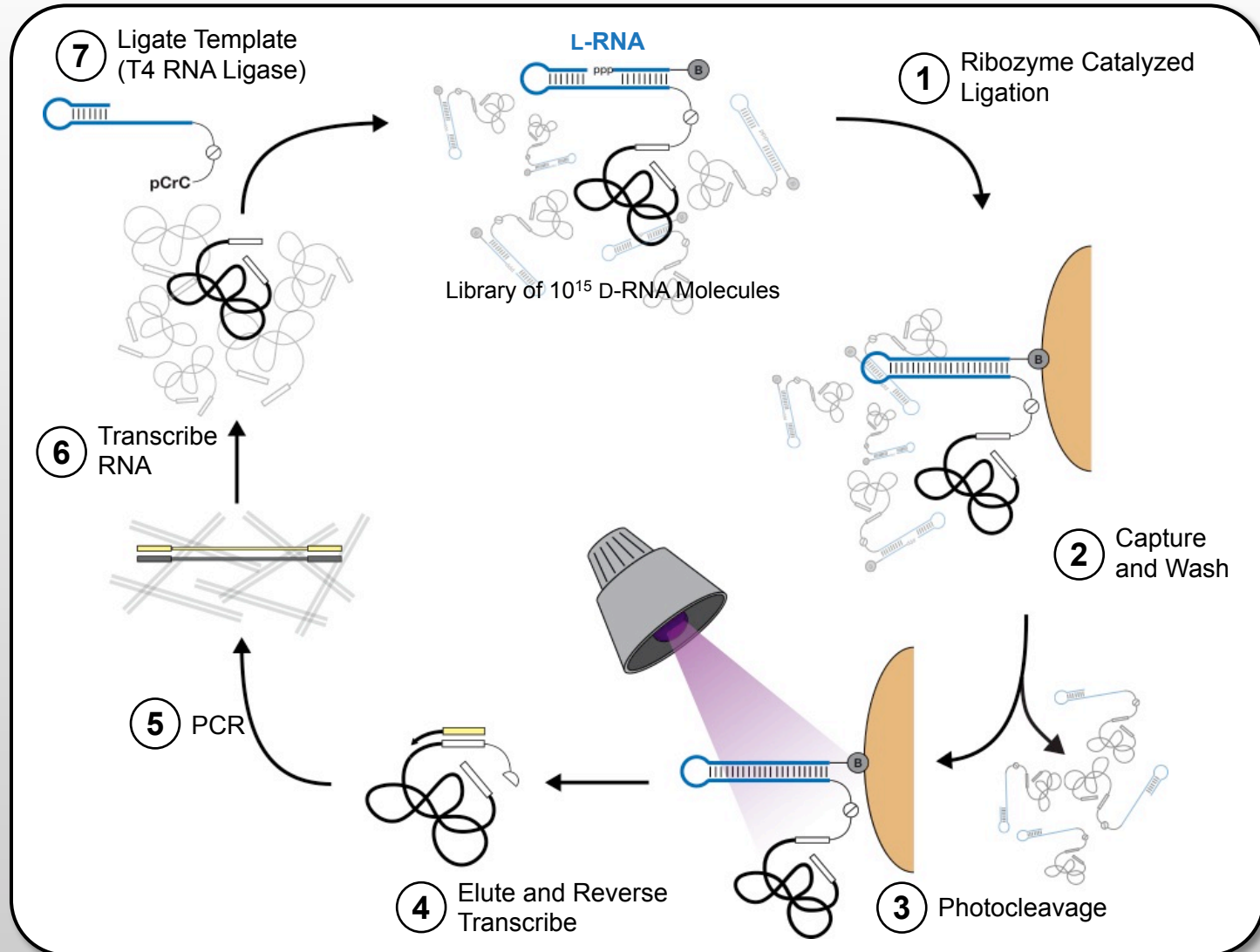
Linker



# In Vitro Evolution of a Cross-Chiral Polymerase Ribozyme

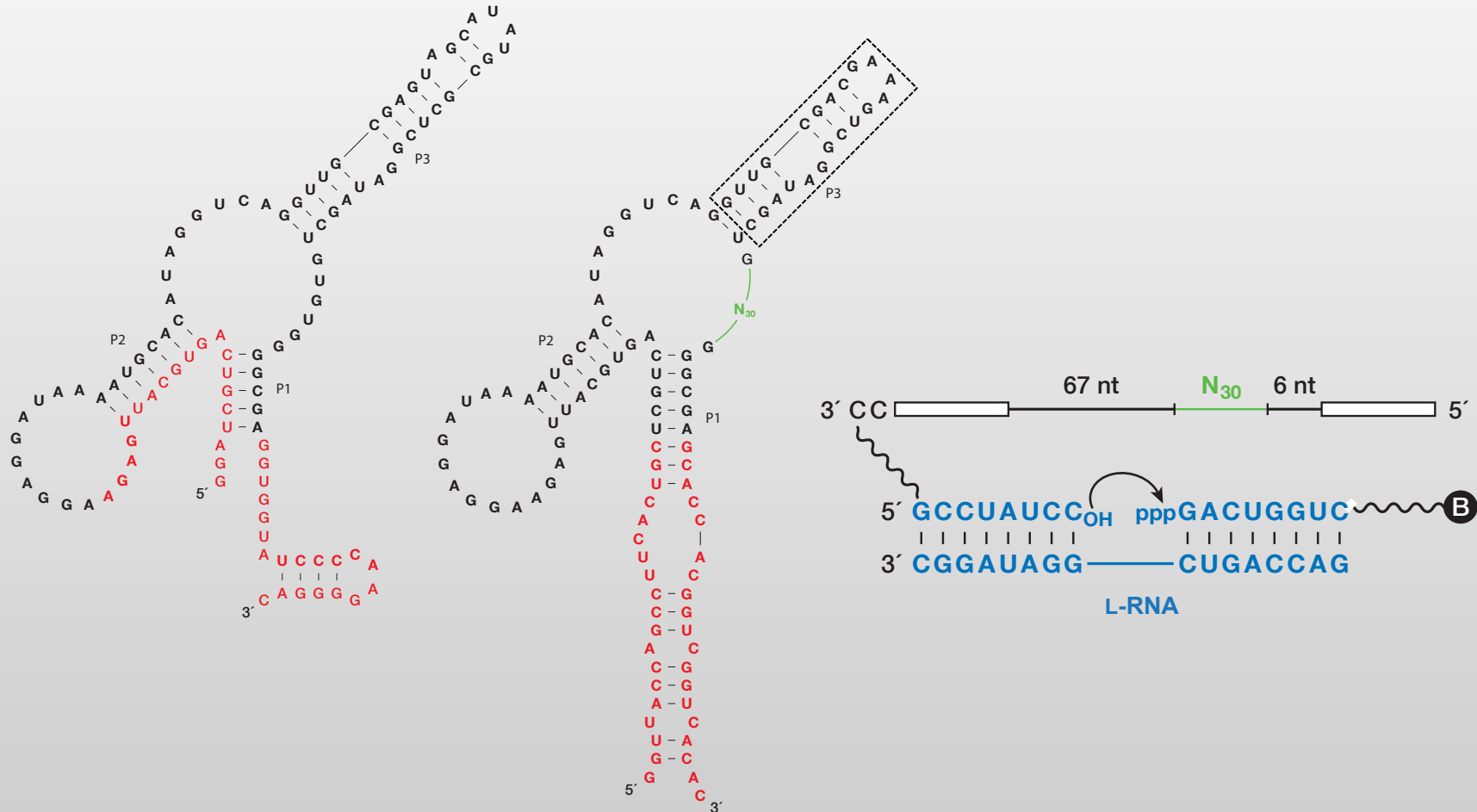


# In Vitro Evolution of a Cross-Chiral Polymerase Ribozyme



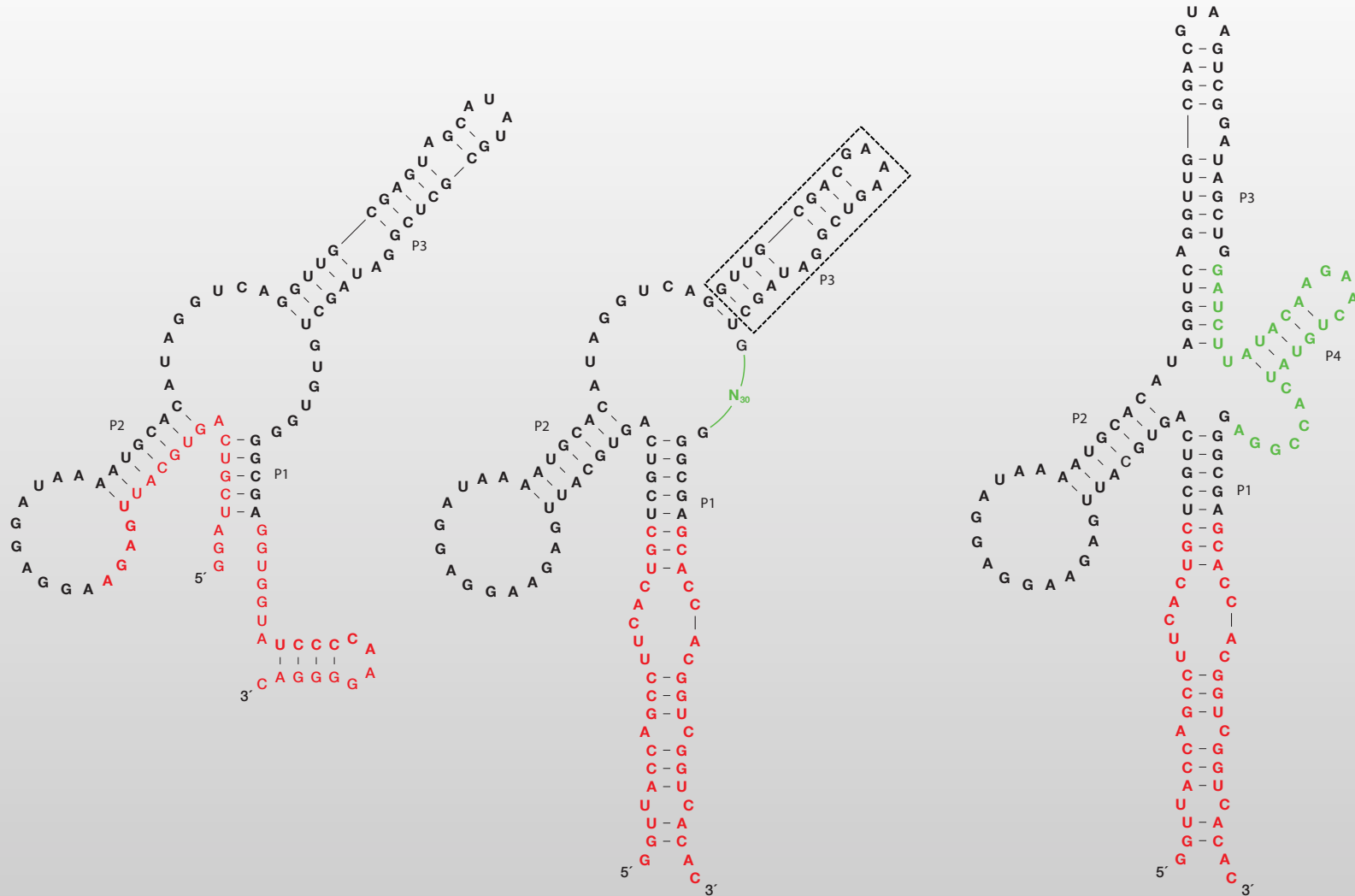


# In Vitro Evolution of a Cross-Chiral Polymerase Ribozyme





# In Vitro Evolution of a Cross-Chiral Polymerase Ribozyme

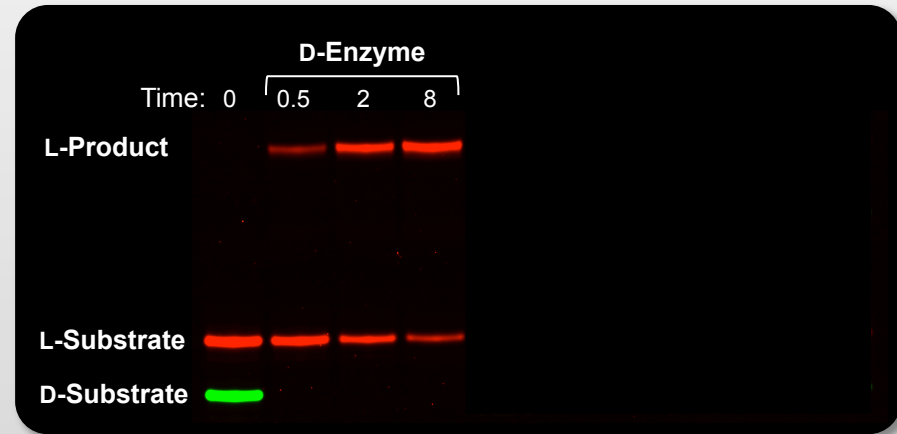
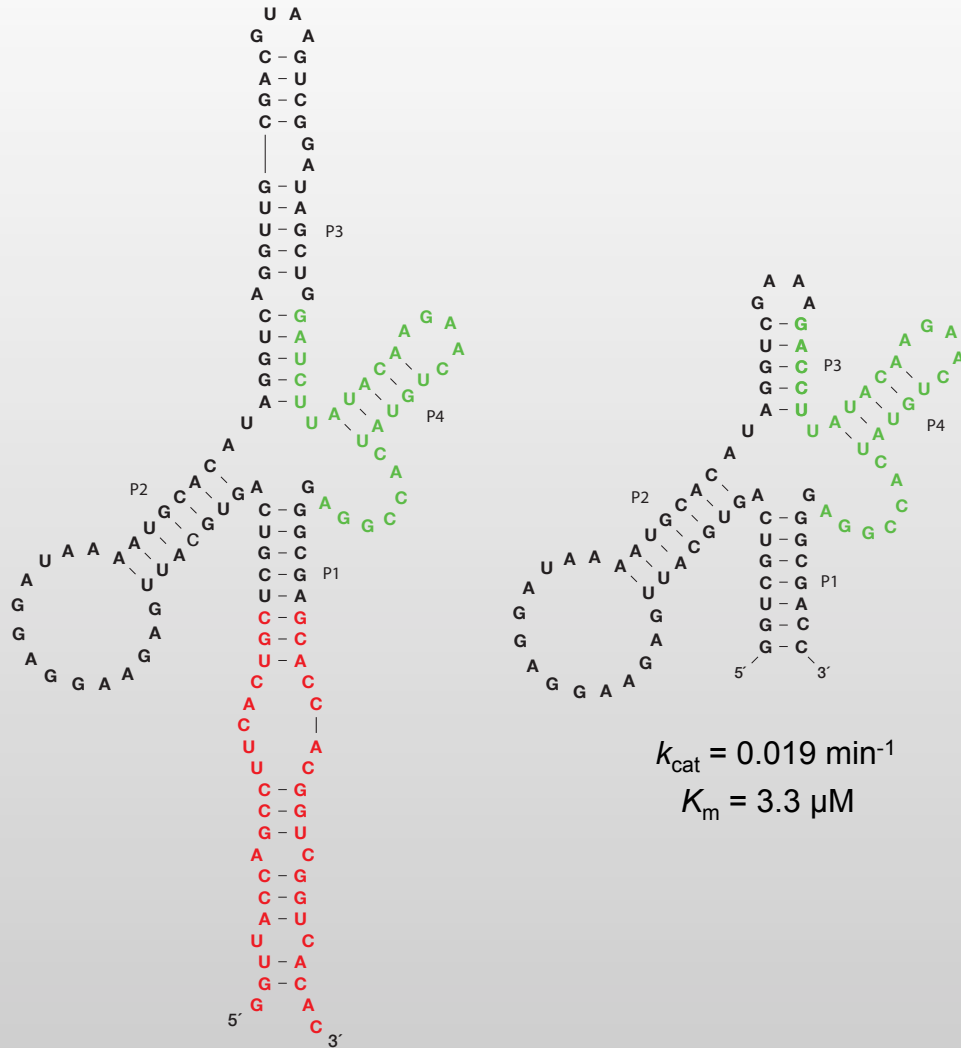








# *In Vitro* Evolution of a Cross-Chiral Polymerase Ribozyme





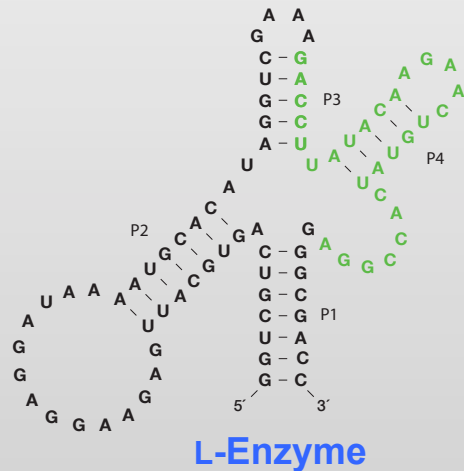
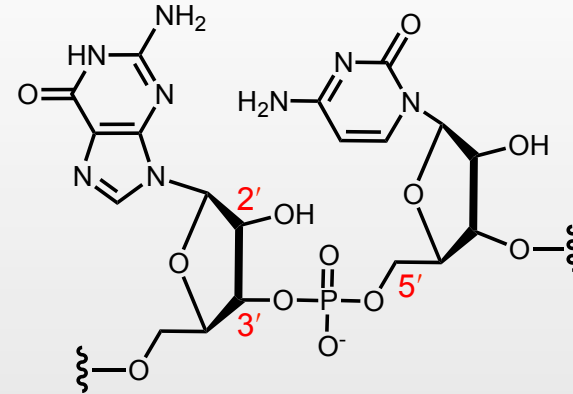
# In Vitro Evolution of a Cross-Chiral Polymerase Ribozyme

## Regiospecificity

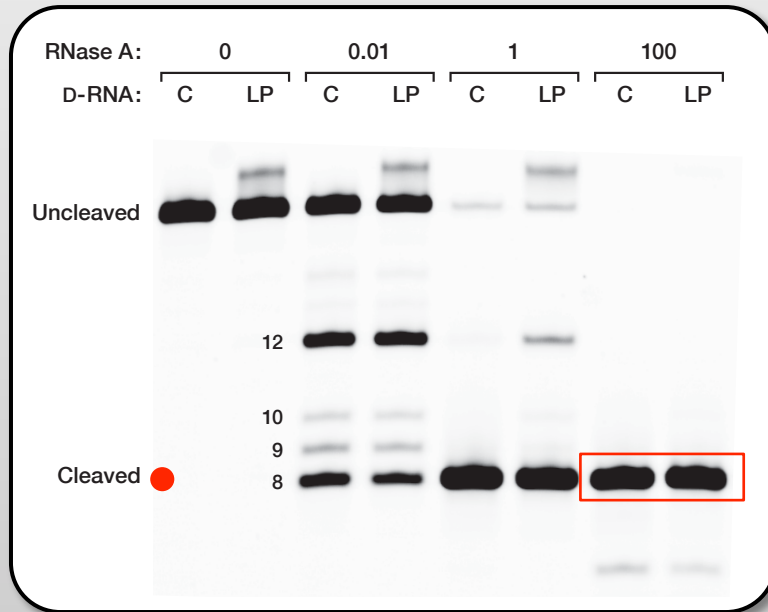
D-RNA



Exclusively 3'-5' Linkages



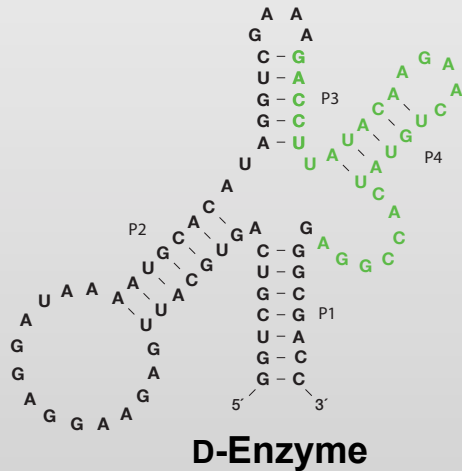
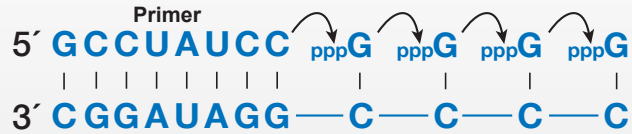
L-Enzyme





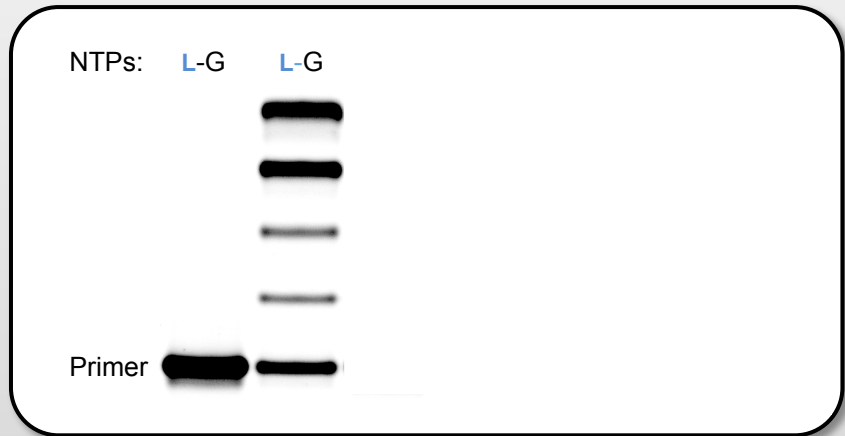
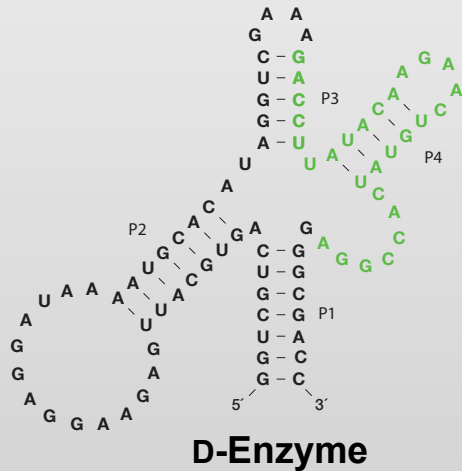
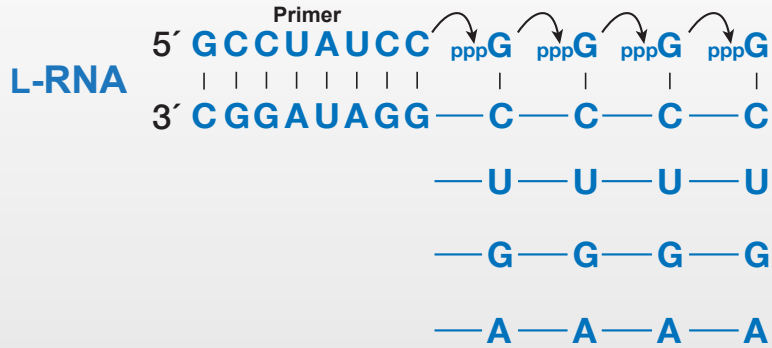
# In Vitro Evolution of a Cross-Chiral Polymerase Ribozyme

L-RNA



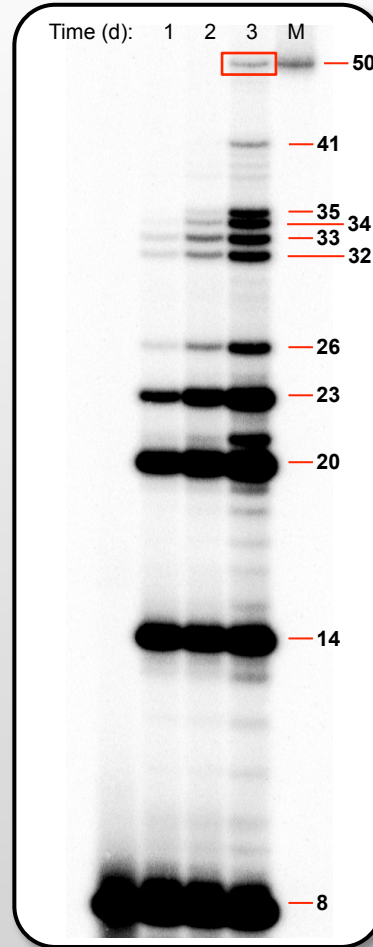
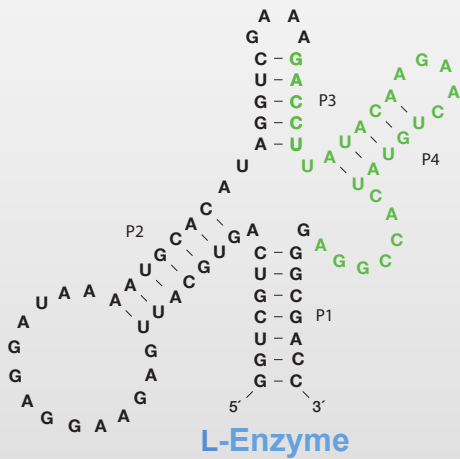


# In Vitro Evolution of a Cross-Chiral Polymerase Ribozyme





# In Vitro Evolution of a Cross-Chiral Polymerase Ribozyme

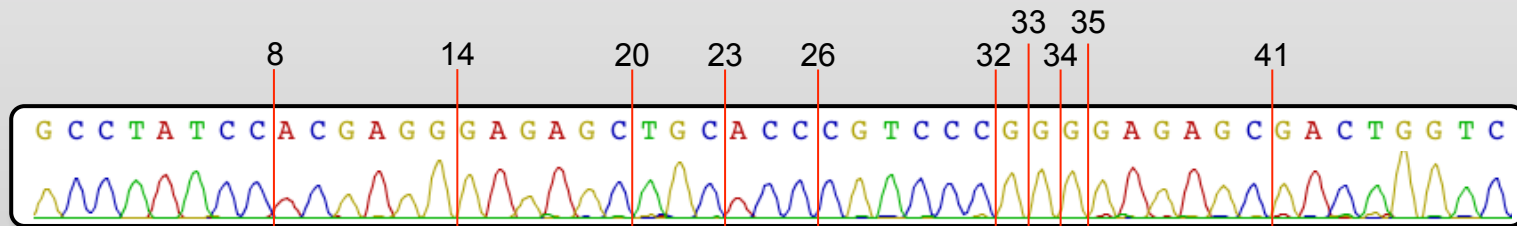
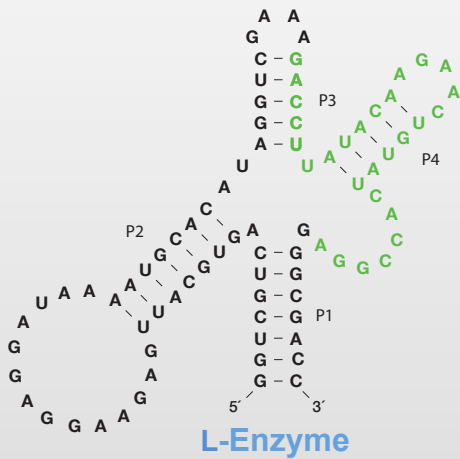


**D-RNA**





# In Vitro Evolution of a Cross-Chiral Polymerase Ribozyme



**D-RNA**

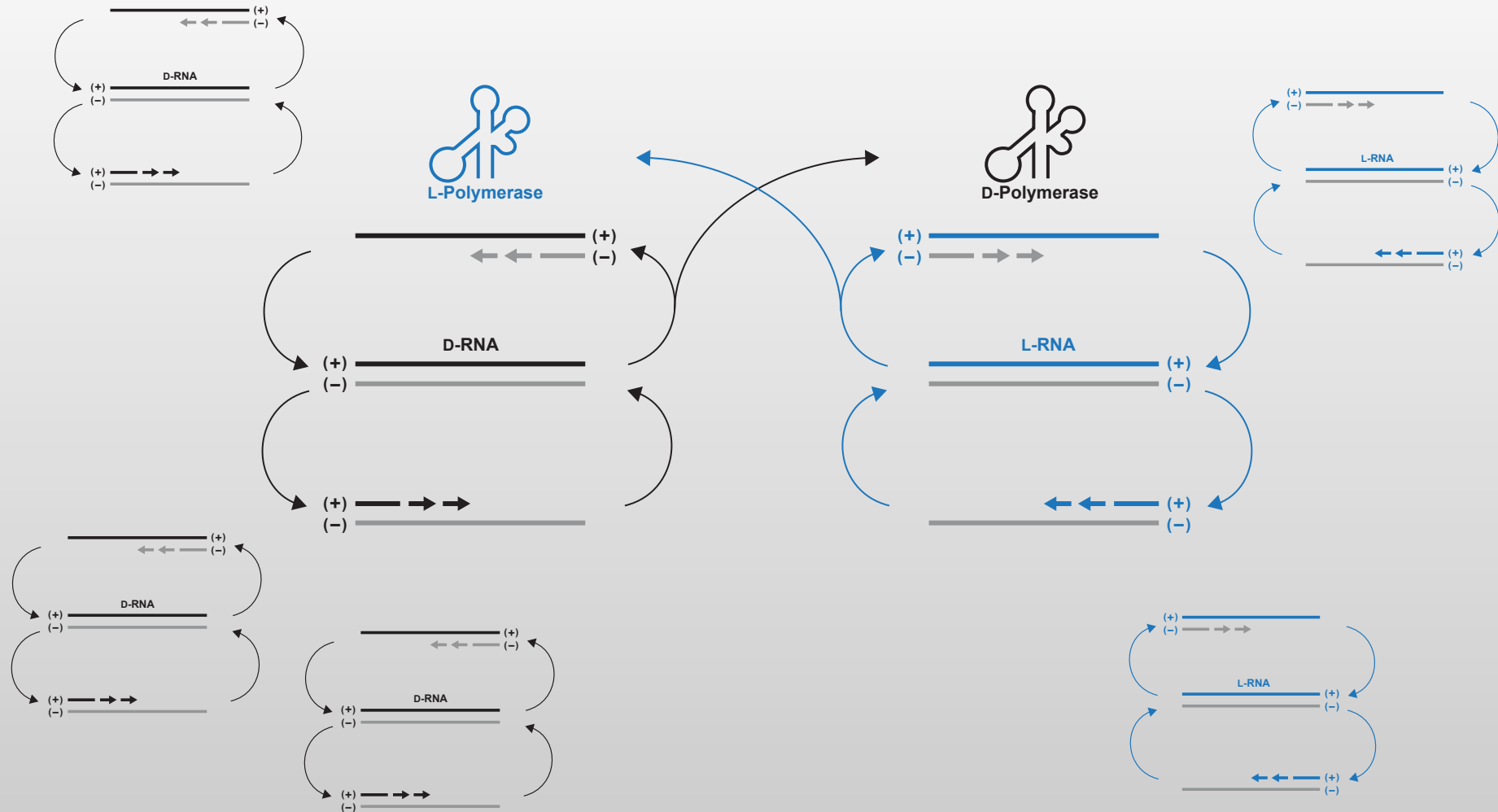
Primer 8 14 20 23 26 32 33 34 35 41  
 5' GCCUAUCC • ACGAGG • GAGAGC • UGC • ACC • CGUCCC • G • G • G • GAGAGC • GACUGGUC  
 3' CGGAUAGG—UGCUC—CUCUCG—ACG—UGG—GCAGGG—C—C—C—CUCUCG—CUGACCAG





# In Vitro Evolution of a Cross-Chiral Polymerase Ribozyme

Self-sustained cross-chiral replication system (model for heterochiral evolution)







# Acknowledgments

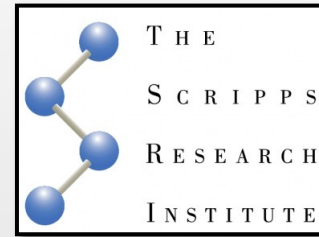
## Joyce Lab

Professor Gerald F. Joyce

## Funding



**SIMONS FOUNDATION**  
Advancing Research in Basic Science and Mathematics



CANCER PREVENTION & RESEARCH  
INSTITUTE OF TEXAS

## Questions?

